

Instruction Sheet

Follow these instructions to replace the CrispyMax Tray Edge.

Subject: CrispyMax Cool Trim Edge Replacement

Models Affected: CrispyMax Serving Stations

4/8/2026

1. Remove the food pan from the unit.
2. Using the enclosed alcohol wipes, clean the side surface of the tray edge where the double-sided tape will be applied (see Figure 1).
3. Allow a few minutes to dry.
4. Align the trim to the edge.
5. Peel off the protective liner off the double-sided tape (see Figure 2).
6. Align the notch in the trim to the tray edge (see Figure 3), ensuring the tray slides completely into the groove of the trim until it stops.
7. Press firmly on the side of the trim to secure the double-sided tape to the tray (see Figure 4).
8. Insert the tree clip fasteners into the holes of the trim until they lock securely into place (see Figure 5 & 6).



Figure 1



Figure 2

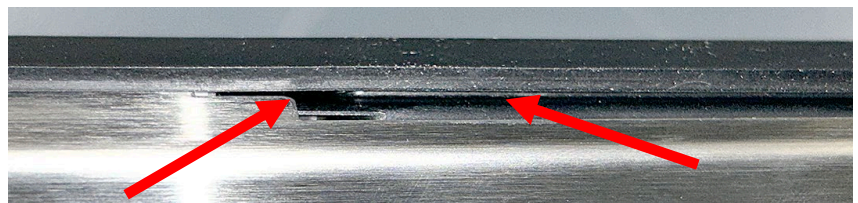


Figure 3

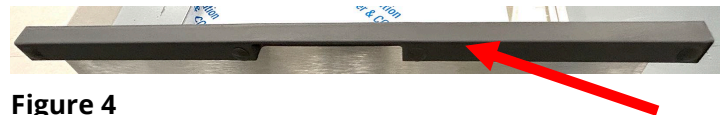


Figure 4

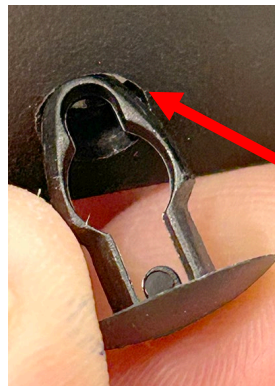


Figure 5

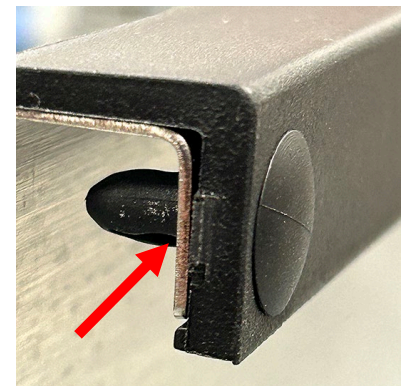


Figure 6